

COWRA CIVIC CENTRE
July 2024

Cowra: Where stories are Intertwined

*Lemon Tea
Theatre*

A teen girl grieving the death of her mother and struggling to connect with her father.

An Australian soldier remembering the challenges of serving in World War II at a POW Camp.

An Aboriginal man remembering stories of how his grandparents and Elders lived during the time of the Cowra POW Breakout at Erambie Mission.



la
LUSI AUSTIN CREATIVE

www.lusiaustin.com

Community Engagement

Pre Show INFO

INTERTWINED

Cowra: Where Stories are Intertwined

Title:

Cast:

What's the
deal?

Style:

Themes:

Think about
this:

Crew:



Pre Show Learning Ideas

INTERTWINED

Cowra: Where Stories are Intertwined



Discuss:

The social, political and economic climate in Australia during 1944 (HT4-2), (HT4-4)

Why prisoner of war camps existed during World War II (HT4-3)

The history of musical theatre and how what the modern musical looks like (MU 4.11)

Outline ways in which Aboriginal Peoples maintain identity (AST4-2)

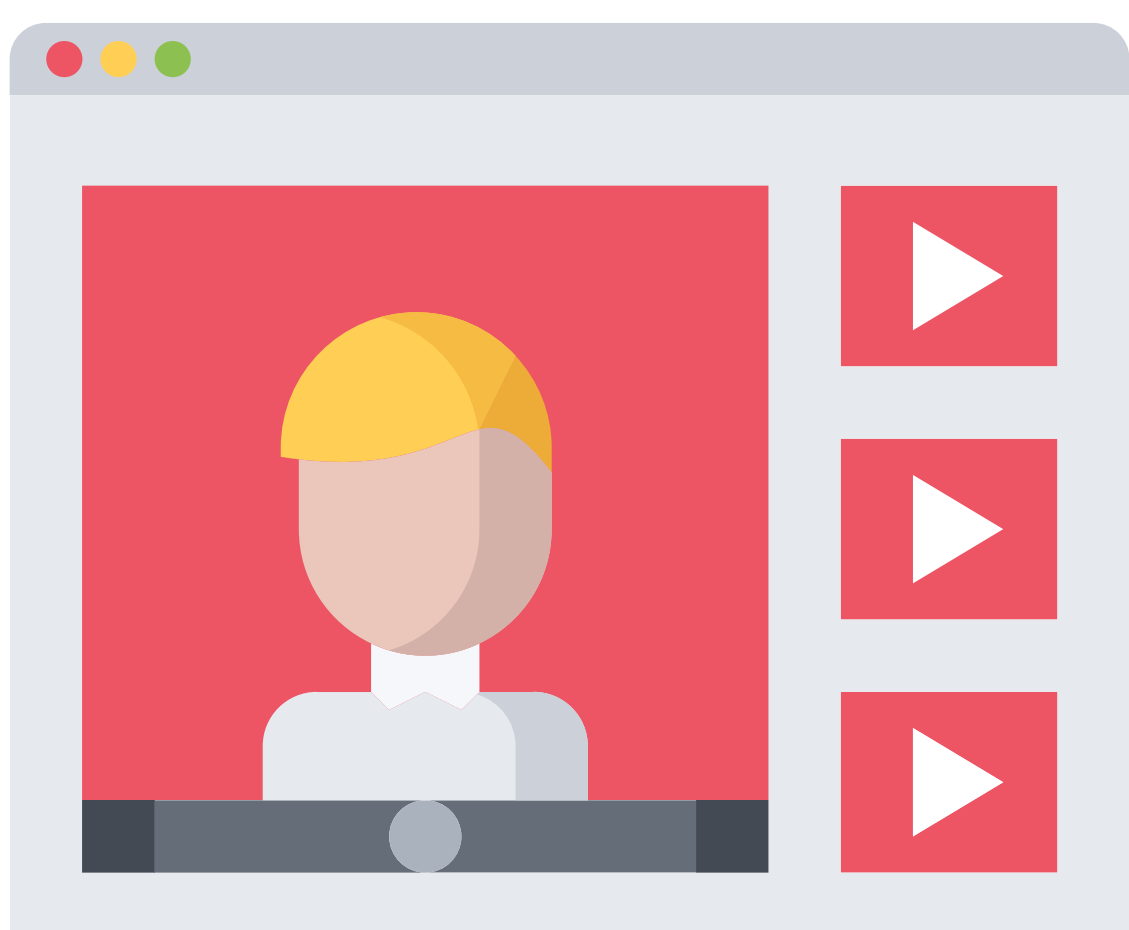


Read:

Freedom Ride by Sue Lawson (additional edu pack [HERE](#))

The Boy in the Striped Pajamas by John Boyne

Japan Diary by Trudy White



Watch:

The Deadly Cowra Mass-Breakout (1944):
Largest Prison Break of World War 2

Cowra: What we can do by Desert Pea Media

Developing Character through Movement

*Lemon Tea
Theatre*

Sources of inspiration: paintings and
tableaux

Body stories

Laban efforts

Developing character through script and
prompts



Researching to Create Character

*Lemon Tea
Theatre*

The role of research in script writing

Important considerations

Indigenous Protocols (ICIP)

What happens after research has been
completed?



la
LUSI AUSTIN CREATIVE

www.lusiaustin.com

Creating Connections On and Off Country

Lemon Tea
Theatre

How can Aboriginal Peoples maintain connection to their identity regardless of where they live?

How do changes in Aboriginal cultural expression across time and location shape Aboriginal People?

Indigenous Protocols (ICIP) in the arts

How have relationships between Aboriginal Peoples and non-Aboriginal peoples changed since World War II?



la
LUSI AUSTIN CREATIVE

www.lusiaustin.com

Elements of Production

*Lemon Tea
Theatre*

Steps involved in getting an independent production to the stage

Technical and practical considerations

Development of Musical Theatre elements

How a score can be developed using technology like Garageband

How can music and lyrics move a story forward on the stage?



Workshop Notes

INTERTWINED

Cowra: Where Stories are Intertwined